

Posterior interosseous nerve release

Pre-operative identification of the three principle muscle groups if possible

Slightly oblique incision starting just distal to lateral epicondyle

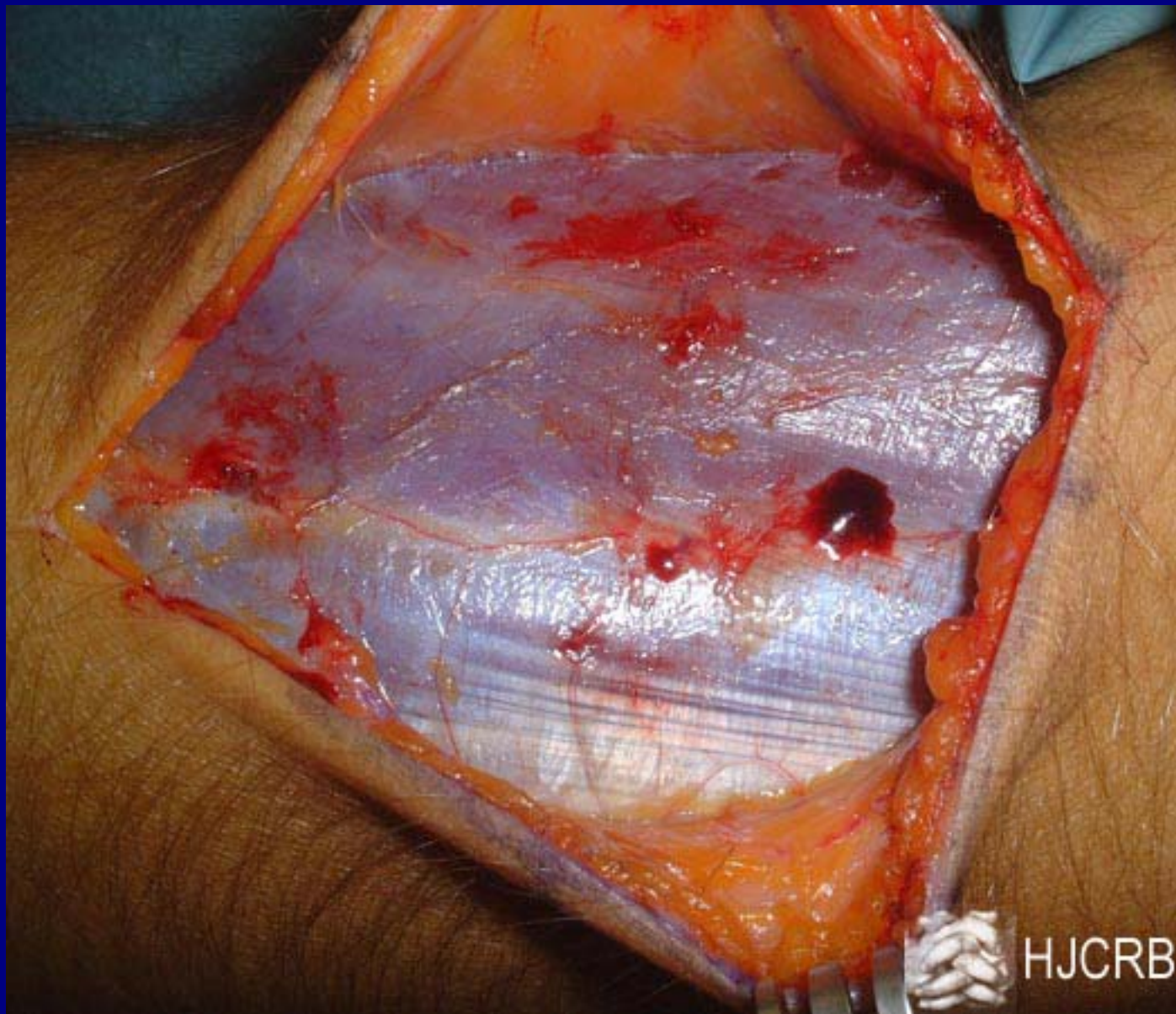
Identification of PION proximally between brachioradialis and ECRL

Identification of PION distally between ECRB and EDC as it enters supinator at the “arcade of Frohse”

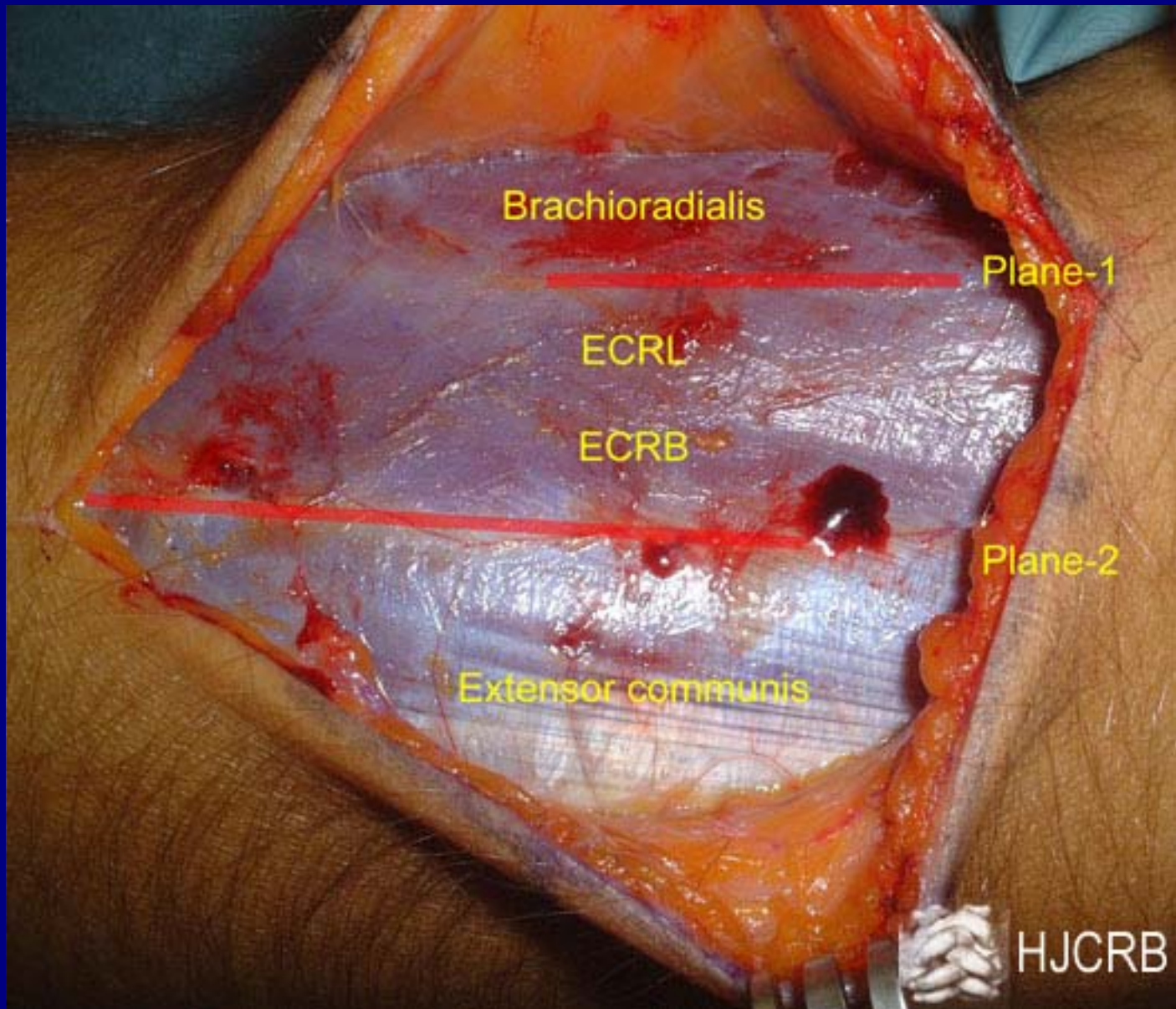
Division of the supinator fibres superficial to the nerve







HJCRB



Brachioradialis

Plane-1

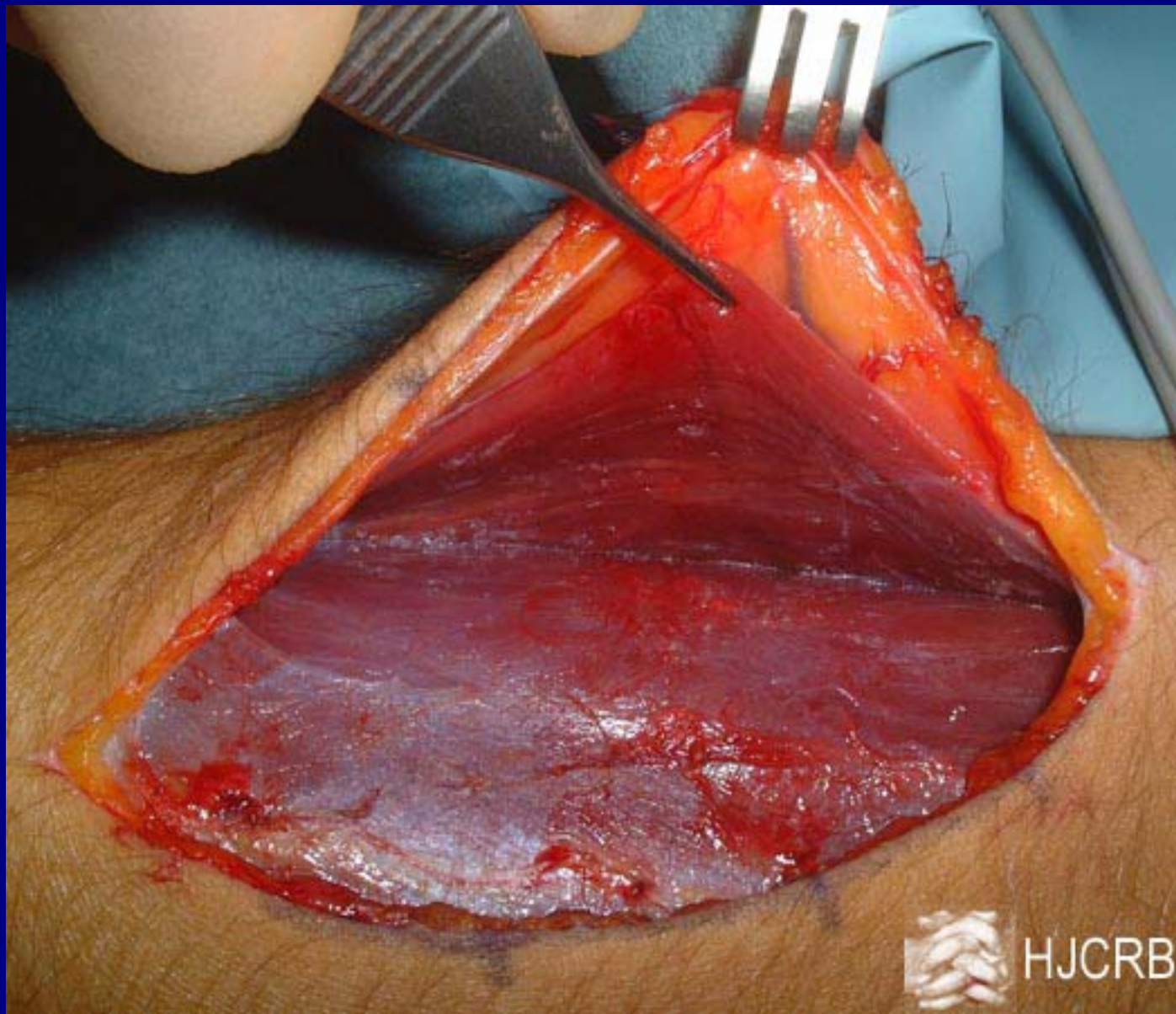
ECRL

ECRB

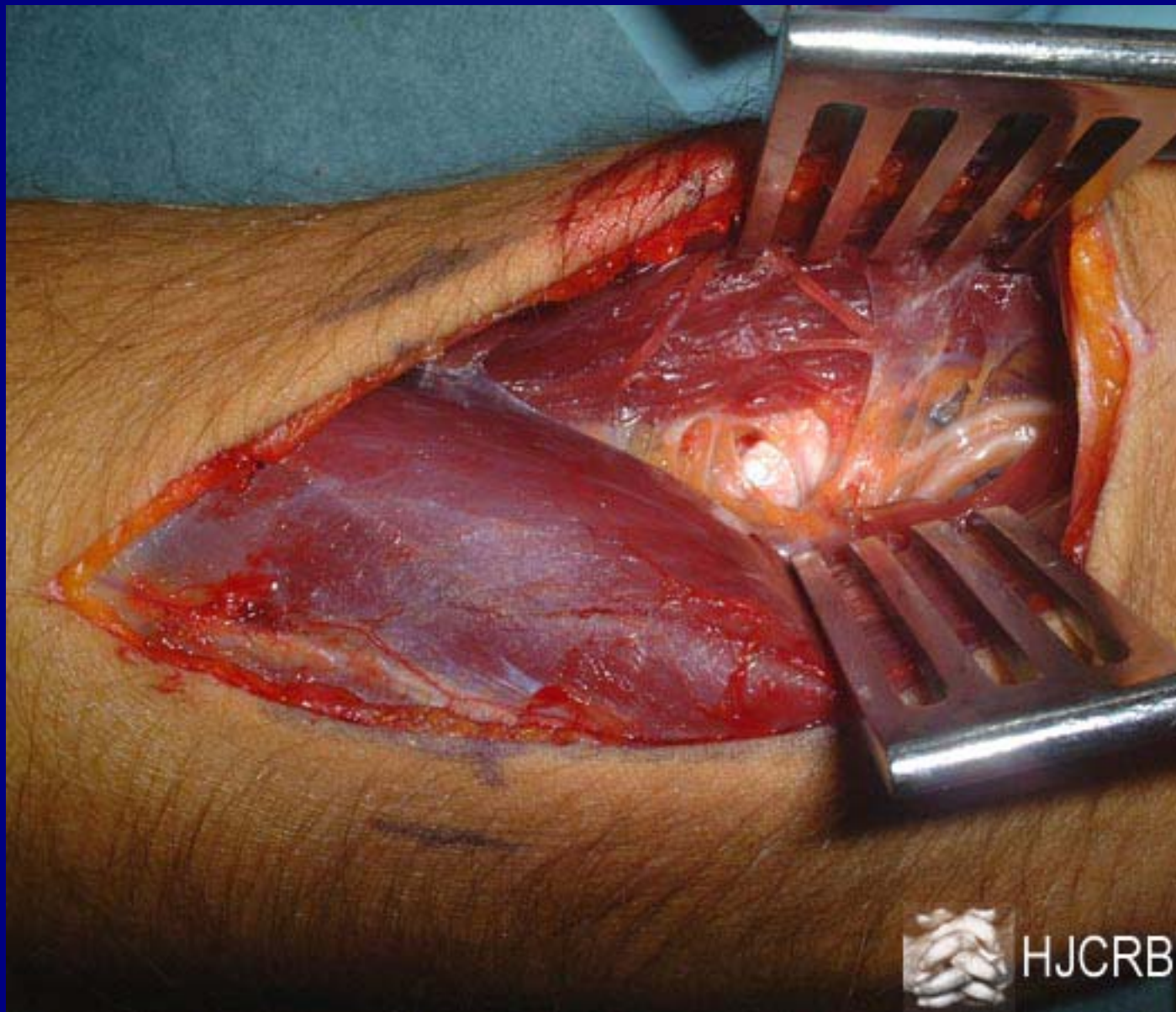
Plane-2

Extensor communis

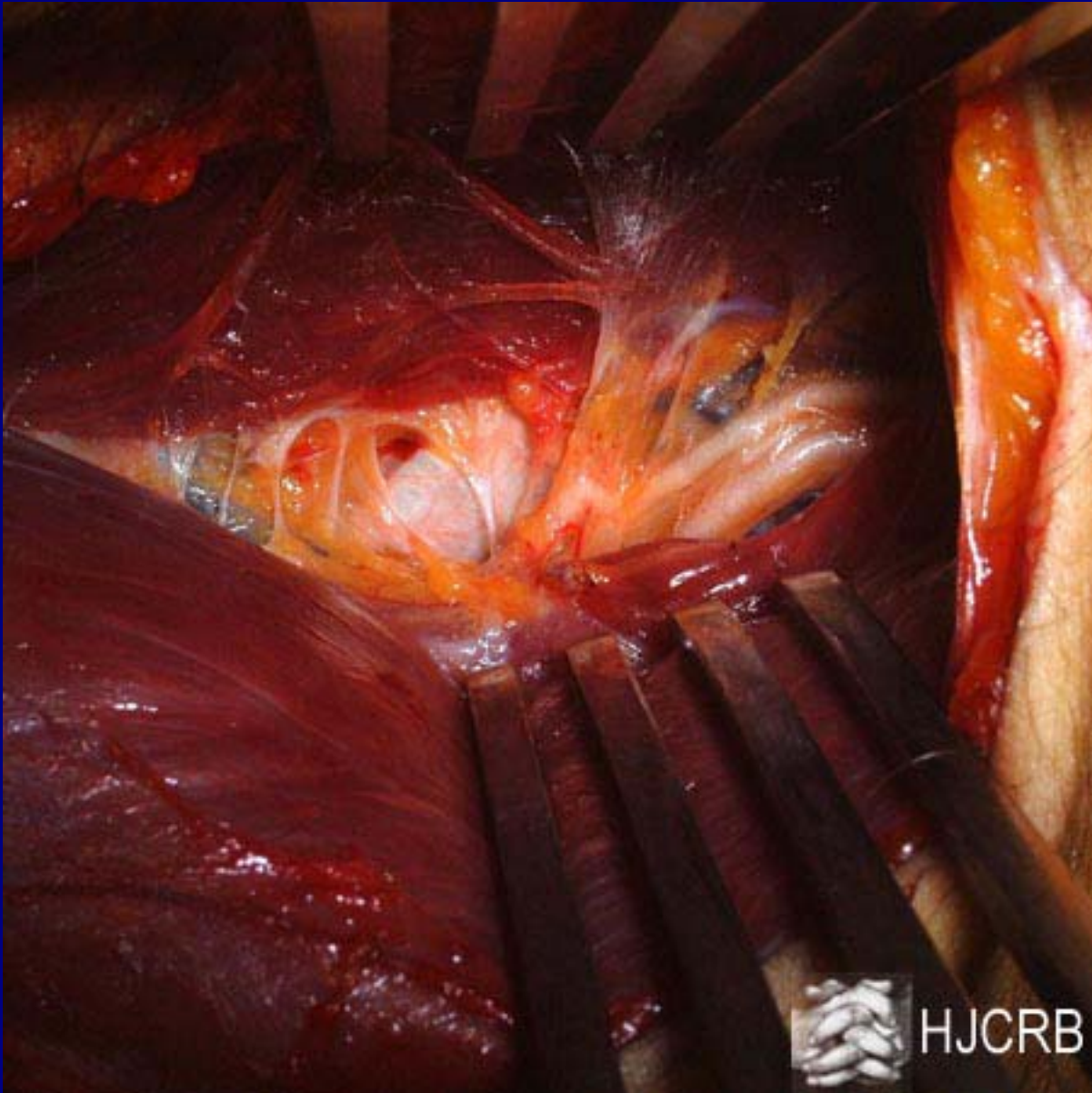
HJCRB



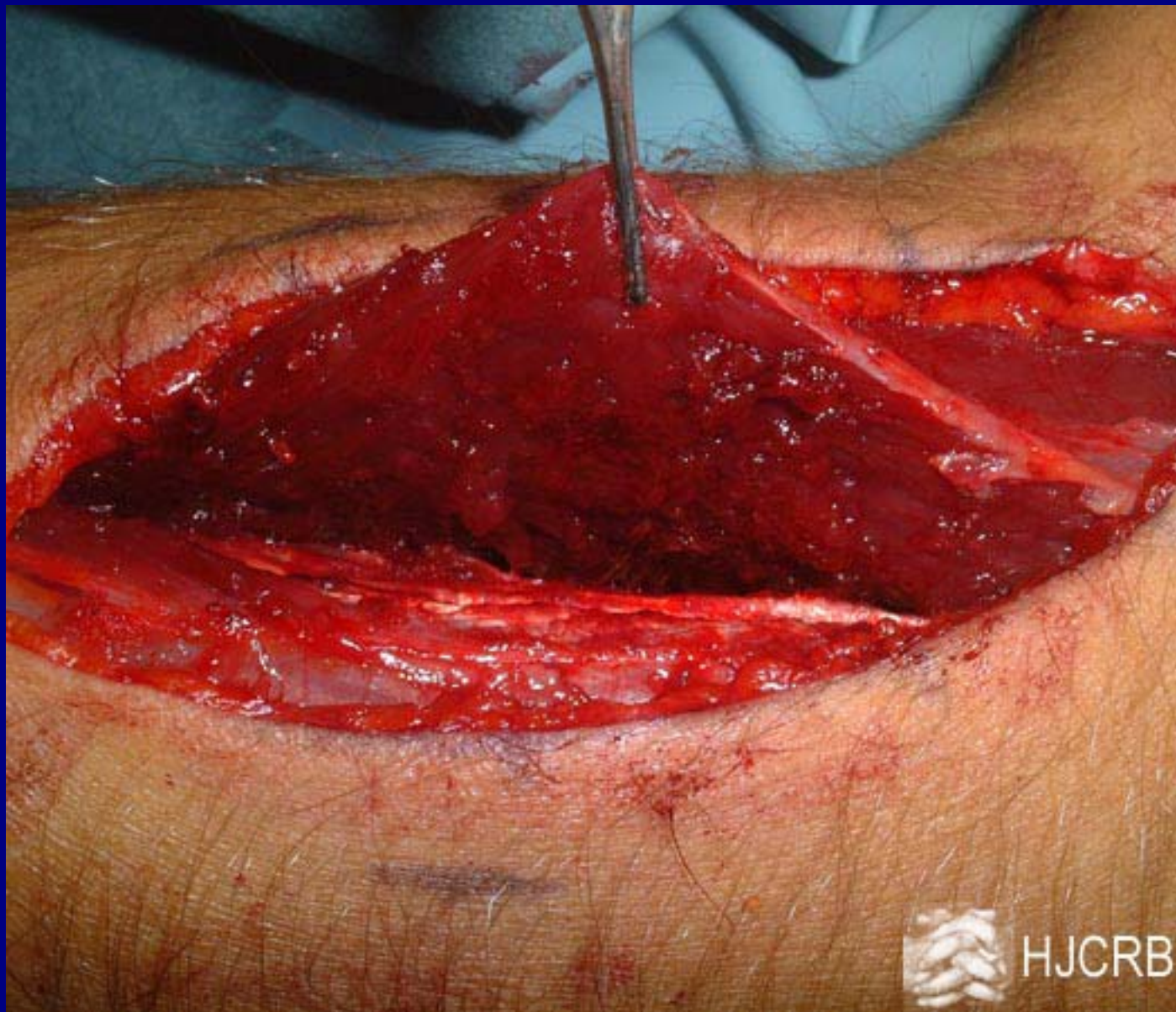
HJCRB



HJCRB



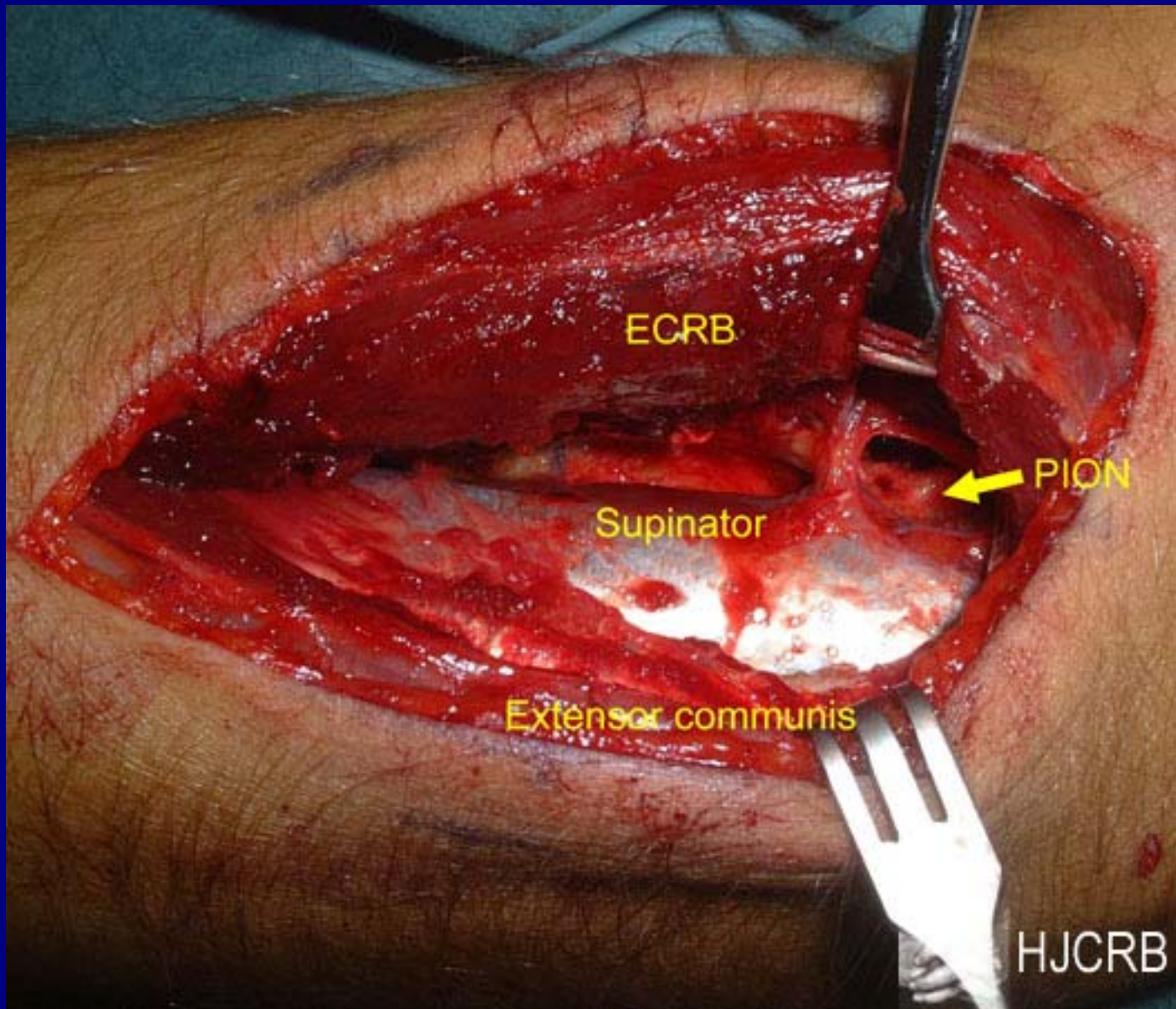
HJCRB

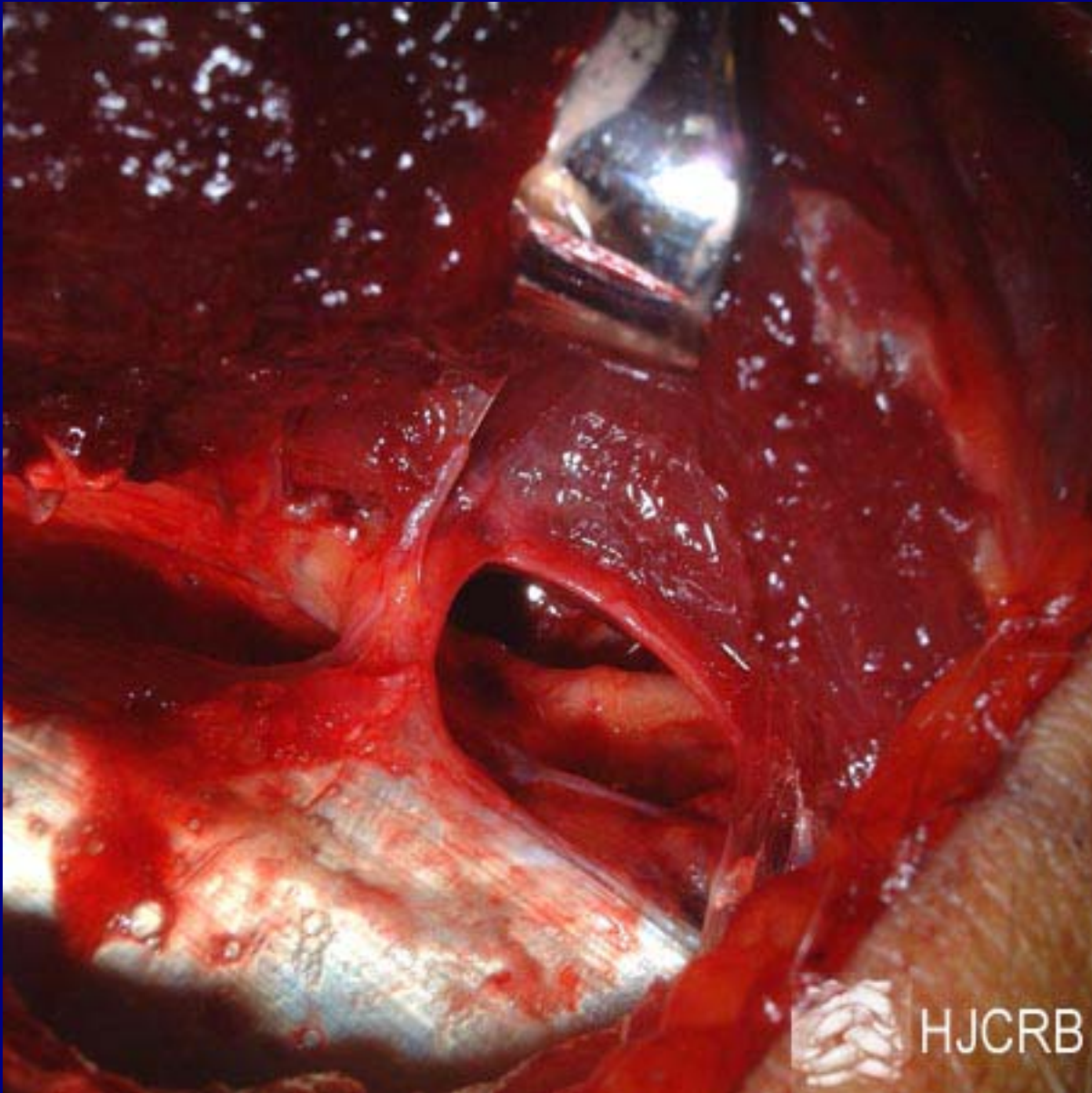


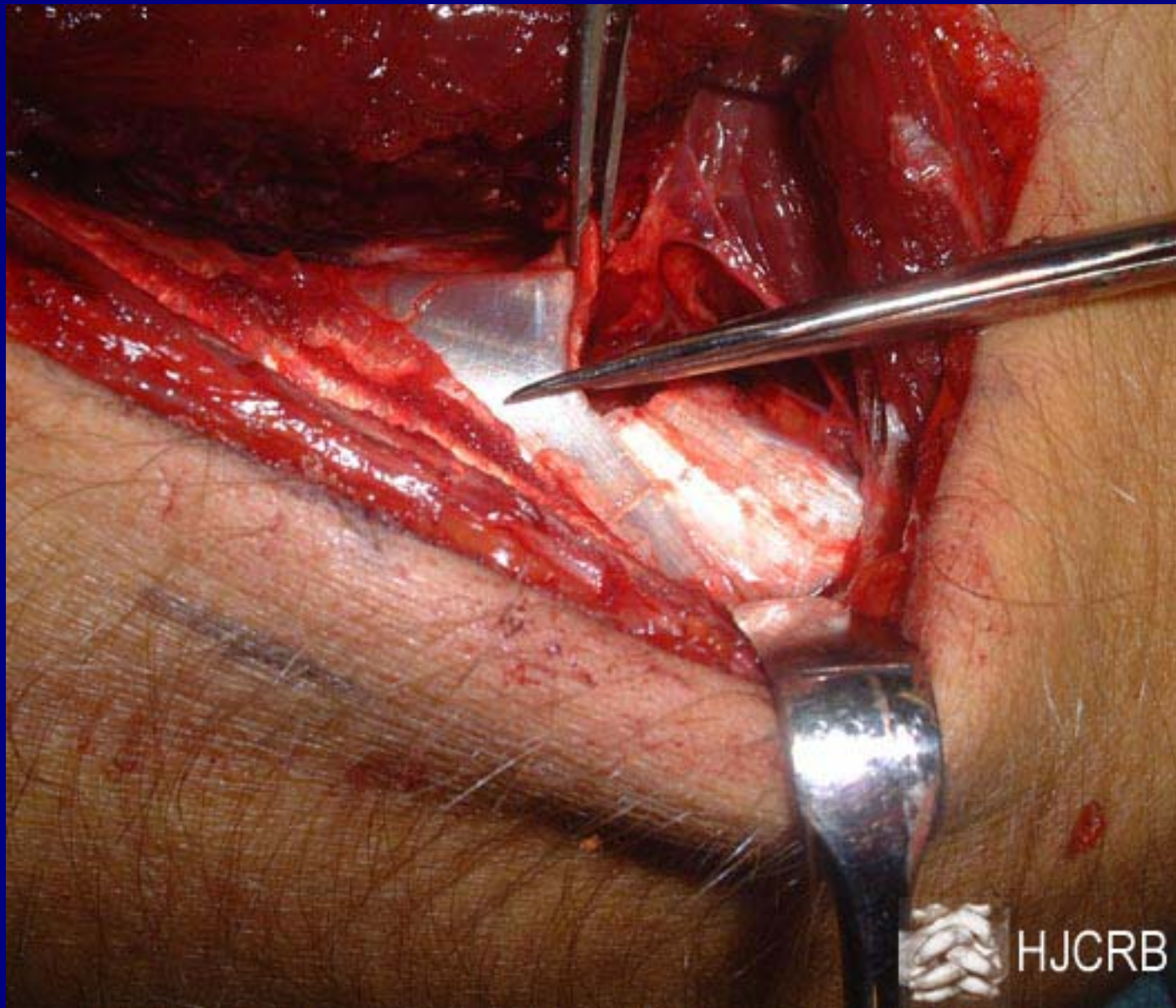
HJCRB



HJCRB



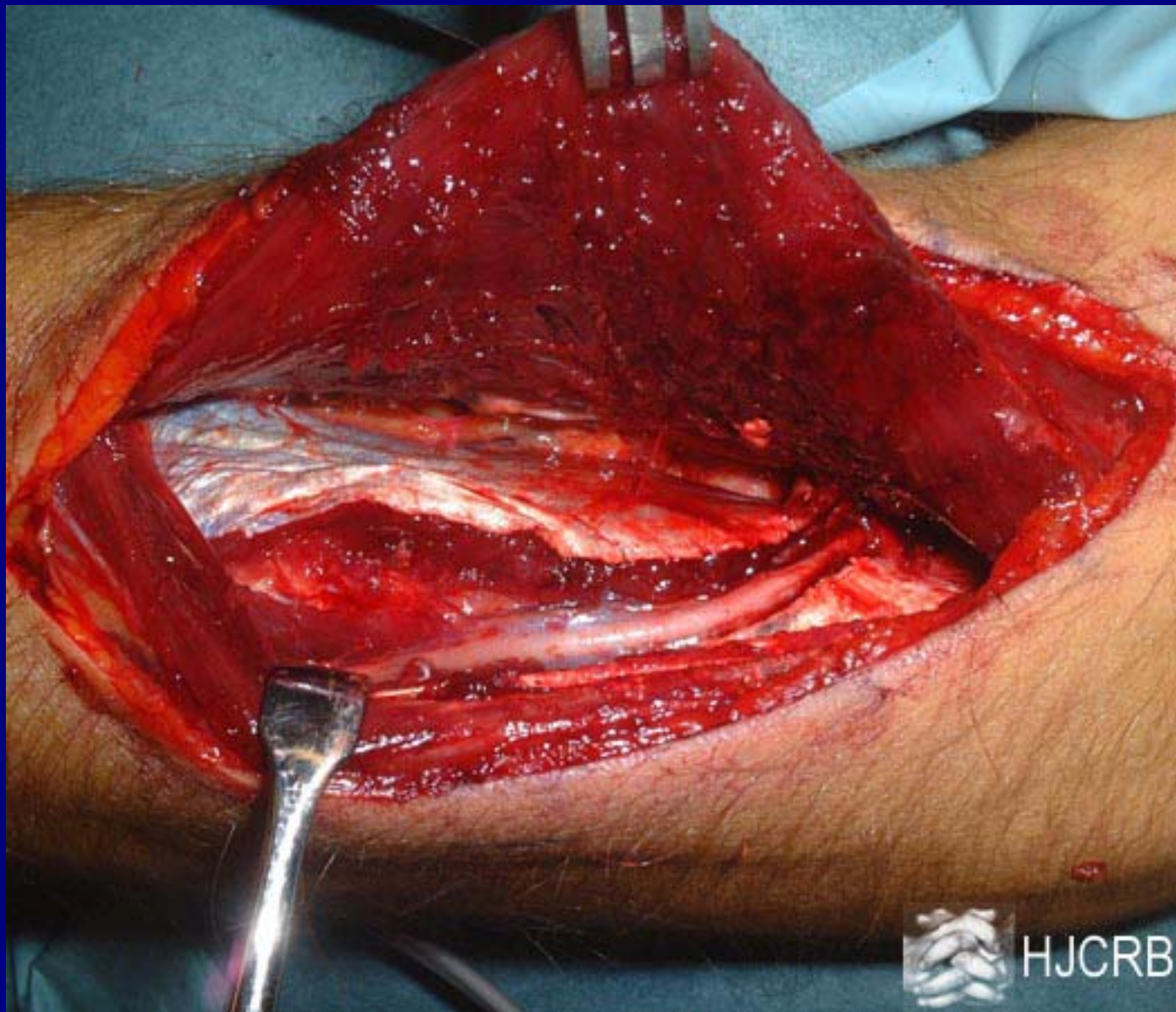




HJCRB



HJCRB



HJCRB





Radial nerve and PION release

Slides 19-22: Cadaveric dissection showing the anterior approach to the radial nerve between brachialis and brachioradialis with identification of the sensory and motor (PION) branches

Slides 23-24: Identification of PION proximally between brachioradialis and ECRL

Slide 25: dissection of PION distally between ECRB and EDC and division of supinator





